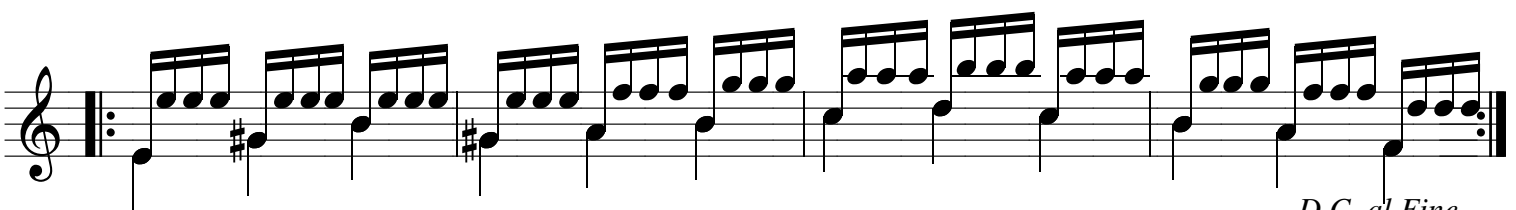
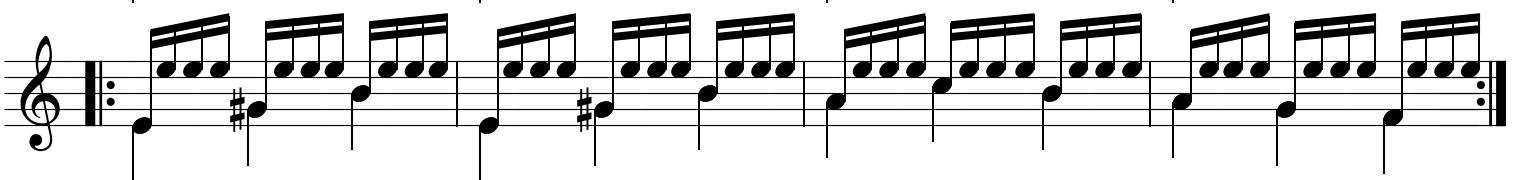
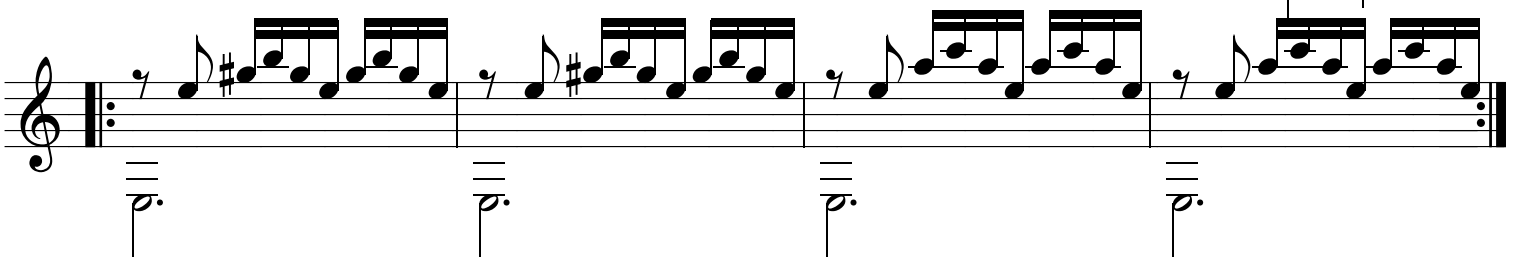
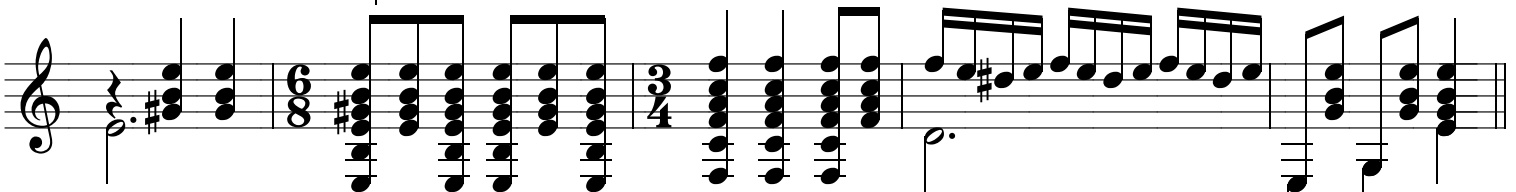
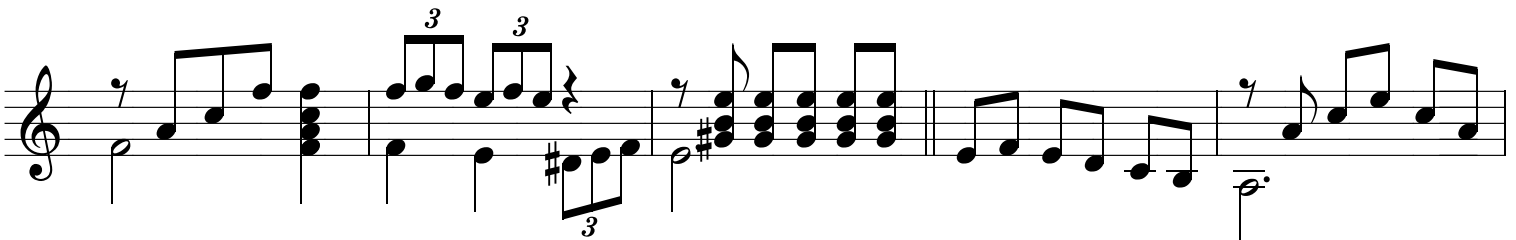
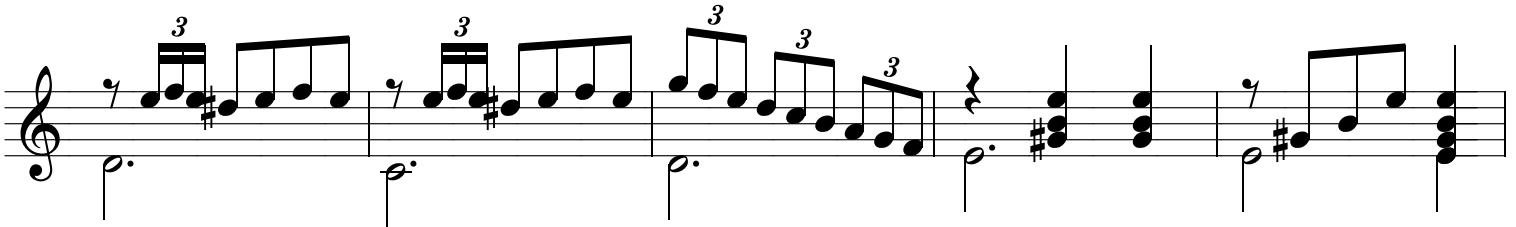
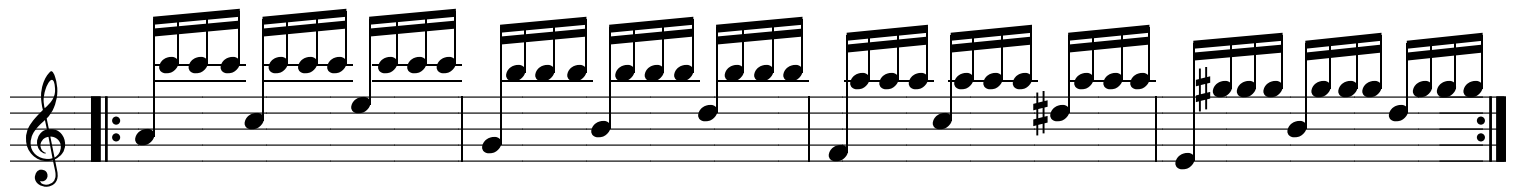


MALAGUENA

Traditional. Arr.: Daniel Fortea

The musical score for "Malaguena" is presented on ten staves. The first two staves are primarily chordal accompaniment, starting in 3/4 time and featuring a key signature of one sharp (F#). The third staff begins with the word "Fine" and contains a melodic line with eighth notes. The fourth and fifth staves continue the melodic development with eighth-note patterns. The sixth staff features a repeat sign and a melodic line with eighth notes. The seventh and eighth staves show a more complex rhythmic pattern with eighth notes and rests. The ninth and tenth staves conclude the piece with triplet markings (indicated by a '3' over the notes) and final chords.



D.C. al Fine